

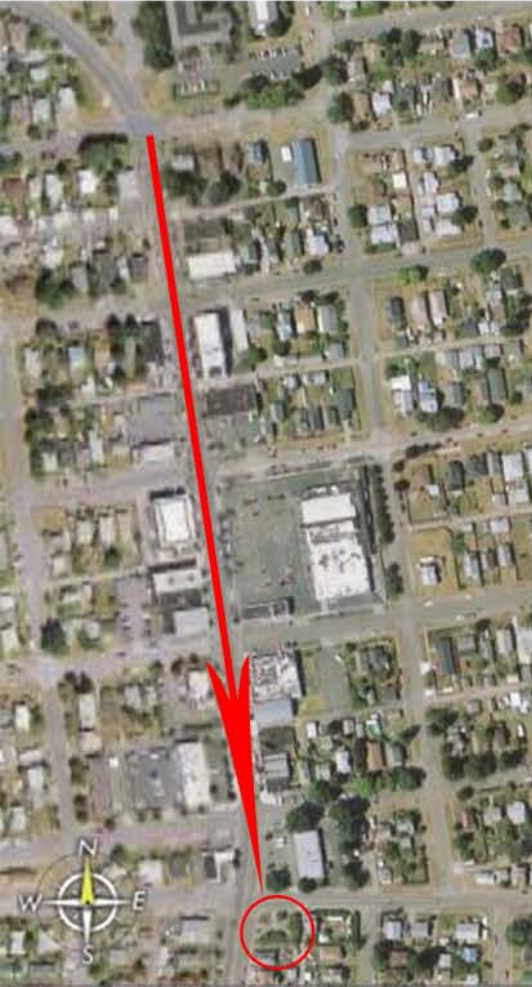
12 VFW PARK

DESIGNED BY: JOSHUA FUSSELMAN

EXISTING SITE & ANALYSIS



Many multi-stemmed trees line the back two sides of the park, as well as one (circled) out by Division Lane. The trees provide beauty, shade, oxygen, and habitat to the area. They ought to be retained.



There is no protection from the elements. Tacoma, on average, receives 39 inches of rain a year received on average 146 days of that year. A covered shelter would render the park usable even on wet days and thereby just about double the number of days the park could be used. In addition, it would provide back-up for scheduled activities that expected dry weather and were surprised with rain.



A small monument honoring veterans of foreign wars sits in the middle of the paved center. A few benches line the edges of the paving. In the back corner of the park is a flag-pole, not readily visible from up the street.

The existing park is located at the south-east corner of McKinley Avenue and Division Lane. Given that the street grid shifts at Division Lane, south-bound traffic on McKinley Avenue face the park directly, giving the park the potential to provide a prominent southern focal terminal point to the proposed Mixed-Use Center.

12

VFW PARK

DESIGNED BY: JOSHUA FUSSELMAN

DESIGN INSPIRATION



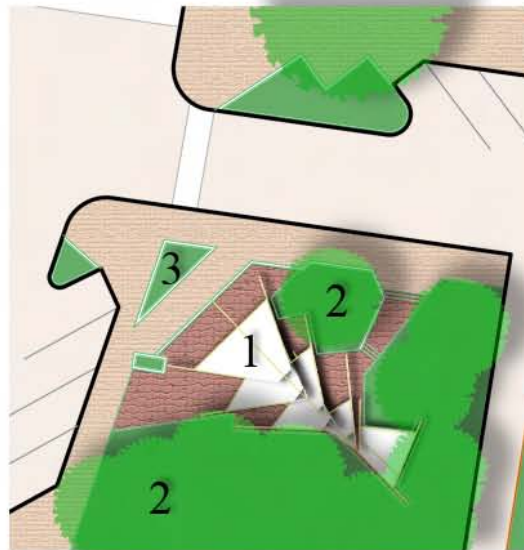
http://www.mste.niuc.edu/courses/ci431fa01/bnickleman/battle_of_iwo_jima.html

In attempting to design an iconic structure that provides protection from the rain and related to the theme of foreign war veterans, the historic image of 6 troops erecting a flag on Iwo Jima provided a starting point from which an abstraction satisfied the design goals.

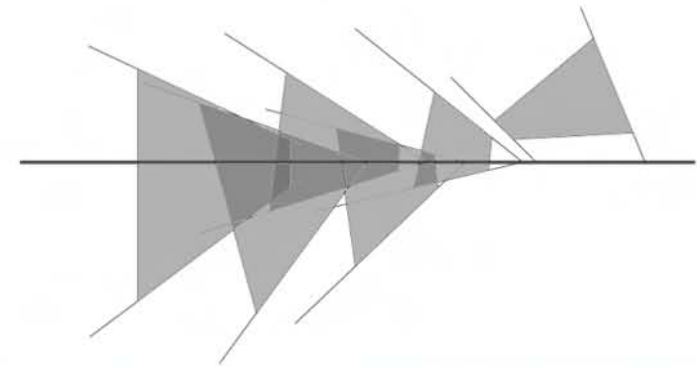


The resulting singular landmark is 80' tall with a 38' x 20' Garrison American Flag (depicted in some of the images as solid red). The tilted flagpole is supported by six angled triangular canopies that keep park visitors dry on rainy days.

- 1 The Canopies.
- 2 Preserved trees.
- 3 Planters.



P
L
A
N



12

VFW PARK

DESIGNED BY: JOSHUA FUSSELMAN



BEFORE

AFTER



12 VFW PARK

DESIGNED BY: JOSHUA FUSSELMAN